

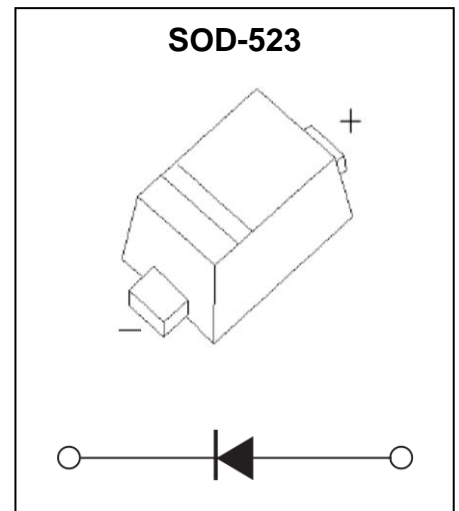
**1SS400 Switching Diode(High speeding switching)**

**Feature**

- Small Speed switching
- High Speed switching
- High Reliability

**Application**

- High Speed switching



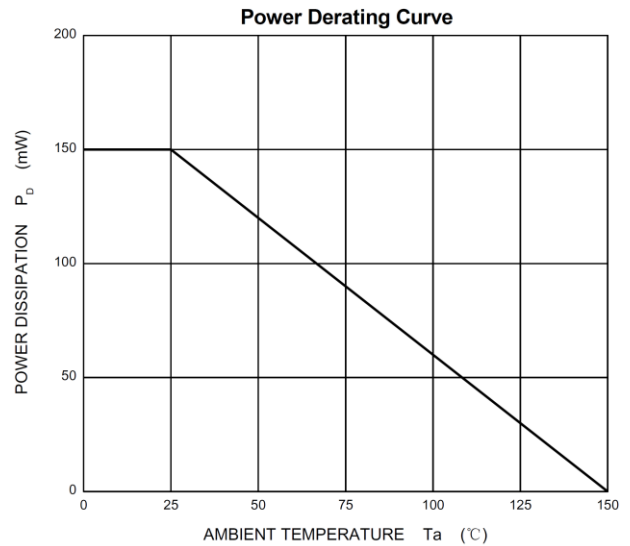
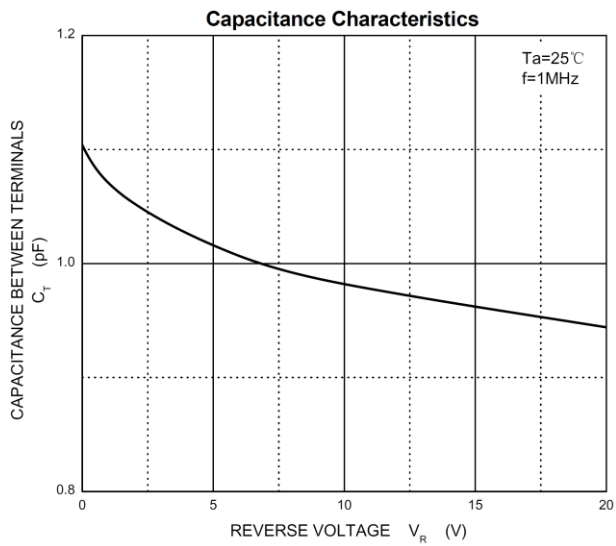
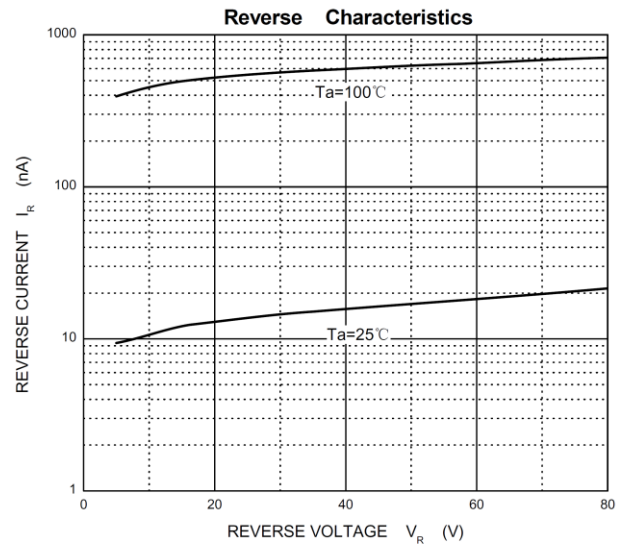
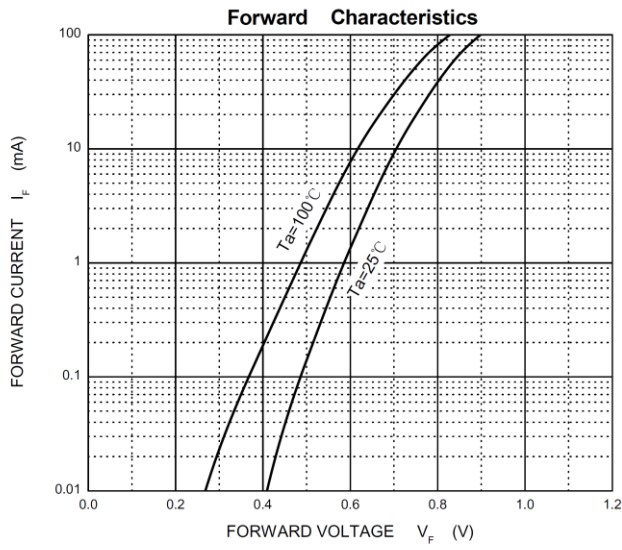
**ABSOLUTE MAXIMUM RATINGS (T<sub>a</sub>=25°C unless otherwise noted)**

Parameter	Symbol	Value	Unit
Non-repetitive peak reverse voltage	V <sub>RM</sub>	90	V
DC blocking voltage	V <sub>R</sub>	80	V
Mean rectifying current	I <sub>O</sub>	0.1	A
Non-repetitive Peak Forward Surge Current @ t=8.3ms	I <sub>FSM</sub>	225	mA
Power Dissipation	P <sub>D</sub>	0.2	W
Thermal Resistance from Junction to Ambient	R <sub>θJA</sub>	833	°C/W
Junction Temperature	T <sub>J</sub>	150	°C
Storage Temperature Range	T <sub>STG</sub>	-55 ~ +150	°C

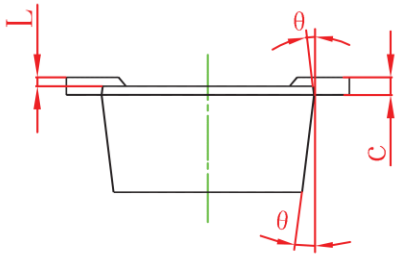
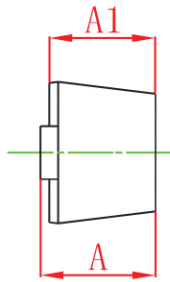
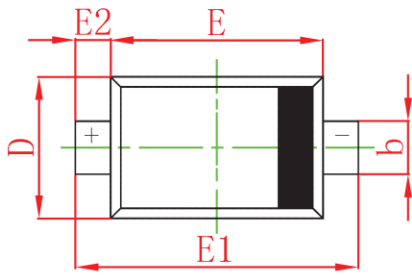
**ELECTRICAL CHARACTERISTICS (T<sub>a</sub>=25°C unless otherwise noted)**

Parameter	Symbol	Test Condition	Min	Type	Max	Unit
Forward voltage	V <sub>F</sub>	I <sub>F</sub> =100mA			1.2	V
Reverse current	I <sub>R</sub>	V <sub>R</sub> =80V			0.1	μA
Capacitance between terminals	C <sub>T</sub>	V <sub>R</sub> =0.5V,f=1MHz			3	pF
Reverse recovery time	t <sub>rr</sub>	I <sub>F</sub> =10mA ,V <sub>R</sub> =6V,R <sub>L</sub> =100Ω			4	ns

**Typical Characteristics**



## SOD-523 Package Outline Dimensions



Symbol	Dimensions In Millimeters		Dimensions In Inches	
	Min	Max	Min	Max
A	0.510	0.770	0.020	0.031
A1	0.500	0.700	0.020	0.028
b	0.250	0.350	0.010	0.014
c	0.080	0.150	0.003	0.006
D	0.750	0.850	0.030	0.033
E	1.100	1.300	0.043	0.051
E1	1.500	1.700	0.059	0.067
E2	0.200 REF		0.008 REF	
L	0.010	0.070	0.001	0.003
$\theta$	7° REF		7° REF	