



Product Summary

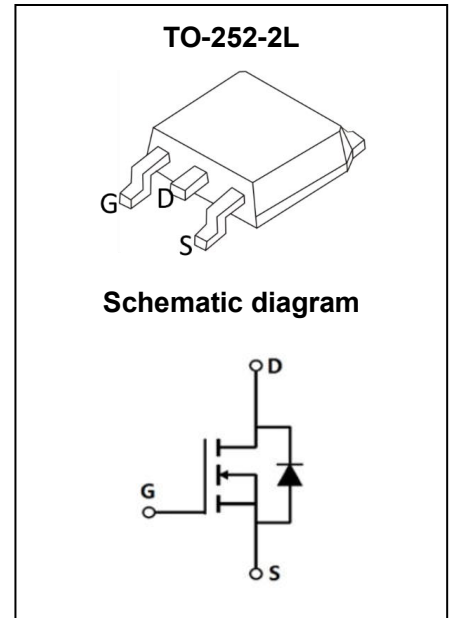
$V_{(BR)DSS}$	$R_{DS(on)TYP}$	I_D
650V	4.6Ω@10V	2A

Feature

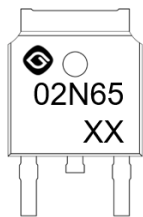
- Low $R_{DS(on)}$
- Low FOM
- Extremely low switching loss
- Good stability and uniformity

Application

- Consumer electronics power supply
- LED Lighting
- Standby Power
- Charger



MARKING:



02N60= Device Code
XX = Date Code

ABSOLUTE MAXIMUM RATINGS ($T_A = 25^\circ\text{C}$ unless otherwise noted)

Parameter	Symbol	Value	Unit
Drain - Source Voltage	V_{DS}	650	V
Gate - Source Voltage	V_{GS}	±30	V
Continuous Drain Current ^{1,6}	I_D	2	A
Pulsed Drain Current ²	I_{DM}	8	A
Single Pulsed Avalanche Current ³	I_{AS}	7	A
Single Pulsed Avalanche Energy ³	E_{AS}	12.5	mJ
Power Dissipation ^{5,6}	P_D	89	W
Thermal Resistance from Junction to Case ⁶	$R_{\theta JC}$	1.4	$^\circ\text{C}/\text{W}$
Junction Temperature	T_J	150	$^\circ\text{C}$
Storage Temperature	T_{STG}	-55~ +150	$^\circ\text{C}$

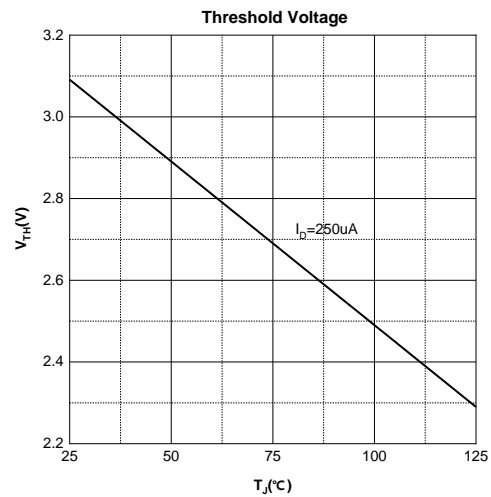
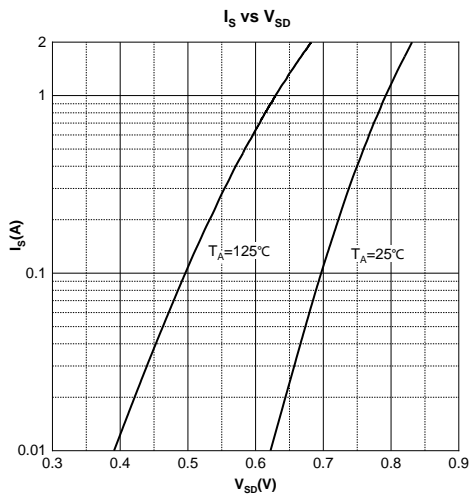
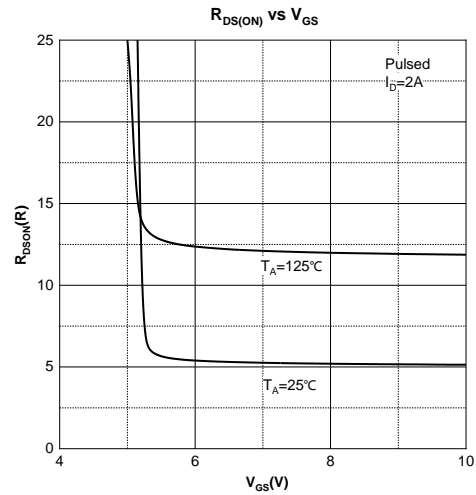
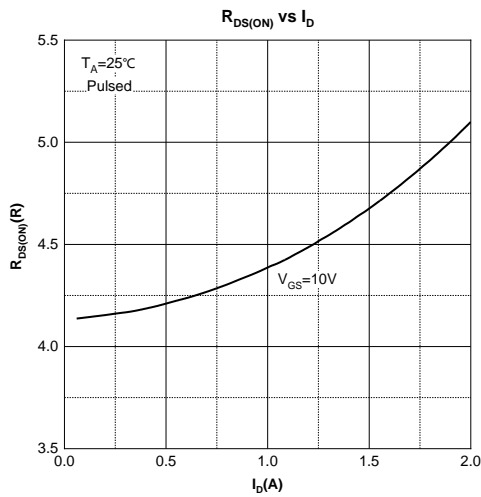
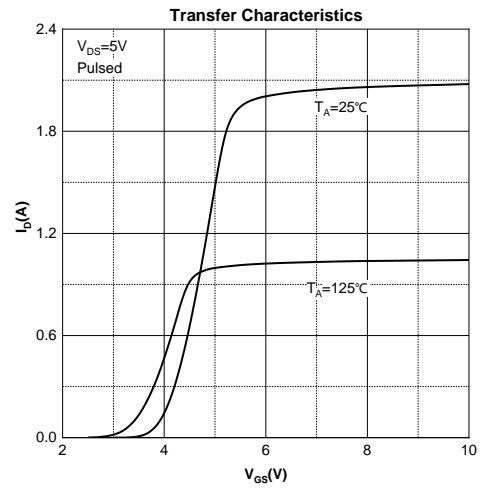
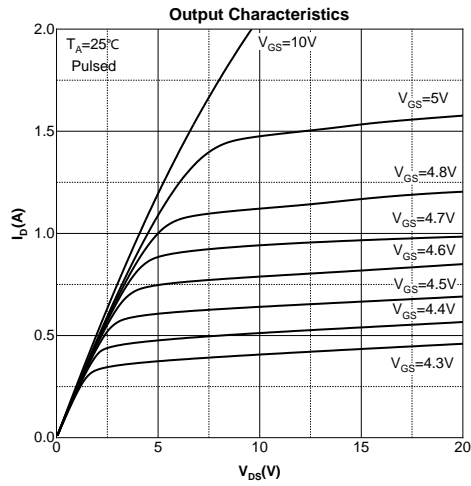
MOSFET ELECTRICAL CHARACTERISTICS ($T_J = 25^\circ\text{C}$ unless otherwise noted)

Parameter	Symbol	Test Condition	Min	Type	Max	Unit
Off Characteristics						
Drain - Source Breakdown Voltage	$V_{(BR)DSS}$	$V_{GS} = 0V, I_D = 250\mu A$	650			V
Zero Gate Voltage Drain Current	I_{DSS}	$V_{DS} = 650V, V_{GS} = 0V$			1	μA
Gate - Body Leakage Current	I_{GSS}	$V_{GS} = \pm 30V, V_{DS} = 0V$			± 100	nA
On Characteristics⁴						
Gate Threshold Voltage	$V_{GS(th)}$	$V_{DS} = V_{GS}, I_D = 250\mu A$	2.0	3.0	4.0	V
Drain-source On-resistance	$R_{DS(on)}$	$V_{GS} = 10V, I_D = 1A$		4.6	6.0	Ω
Dynamic Characteristics						
Input Capacitance	C_{iss}	$V_{DS} = 50V, V_{GS} = 0V, f = 1MHz$		326		pF
Output Capacitance	C_{oss}			24		
Reverse Transfer Capacitance	C_{rss}			2.4		
Gate Resistance	R_g	$V_{DS} = 0V, V_{GS} = 0V, f = 1MHz$		3.1		Ω
Switching Characteristics						
Total Gate Charge	Q_g	$V_{DS} = 300V, V_{GS} = 10V, I_D = 1A$		3.6		nC
Gate-source Charge	Q_{gs}			1.0		
Gate-drain Charge	Q_{gd}			1.5		
Turn-on Delay Time	$t_{d(on)}$	$V_{DD} = 300V, V_{GS} = 10V, I_D = 2A, R_G = 3\Omega$		12		ns
Turn-on Rise Time	t_r			21		
Turn-off Delay Time	$t_{d(off)}$			30		
Turn-off Fall Time	t_f			24		
Source - Drain Diode Characteristics						
Diode Forward Voltage ⁴	V_{SD}	$V_{GS} = 0V, I_S = 2A$			1.2	V

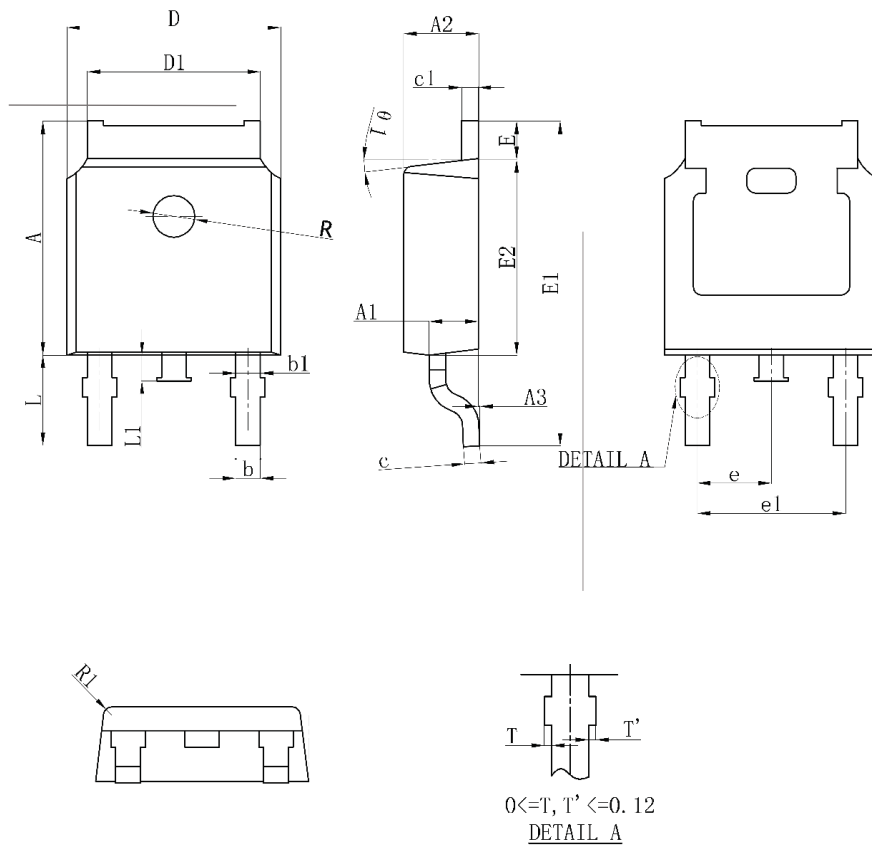
Notes :

1. The maximum current rating is limited by package.
2. Pulse Test : Pulse Width $\leq 10\mu s$, duty cycle $\leq 1\%$.
3. EAS condition: $V_{DD} = 100V, V_{GS} = 10V, L = 0.5mH, R_G = 25\Omega$ Starting $T_J = 25^\circ\text{C}$.
4. Pulse Test : Pulse Width $\leq 300\mu s$, duty cycle $\leq 2\%$.
5. The power dissipation P_D is limited by $T_{J(MAX)} = 150^\circ\text{C}$.
6. Device mounted on $1in^2$ FR-4 board with 2oz. Copper, in a still air environment with $T_A = 25^\circ\text{C}$.

Typical Characteristics



TO-252-2L Package Information



Symbol	Dimensions In Millimeters		Dimensions In Inches	
	Min.	Max.	Min.	Max.
A	7.050	7.150	0.278	0.281
A1	0.960	1.060	0.038	0.042
A2	2.200	2.400	0.087	0.094
A3	0.000	0.100	0.000	0.004
b	0.760REF		0.030REF	
b1	1.000REF		0.039REF	
c	0.508REF		0.020REF	
c1	0.508REF		0.020REF	
D	6.550	6.650	0.258	0.262
D1	5.100	5.460	0.201	0.215
E	0.950	1.050	0.037	0.041
E1	9.700	10.400	0.382	0.409
E2	6.000	6.200	0.236	0.244
e	2.286BSC		0.090BSC	
e1	4.572REF		0.180REF	
L	2.650	2.950	0.104	0.116
L1	0.700	0.900	0.028	0.035
θ 1	7°REF		7°REF	
R	1.300REF		0.051REF	
R1	0.250REF		0.010REF	